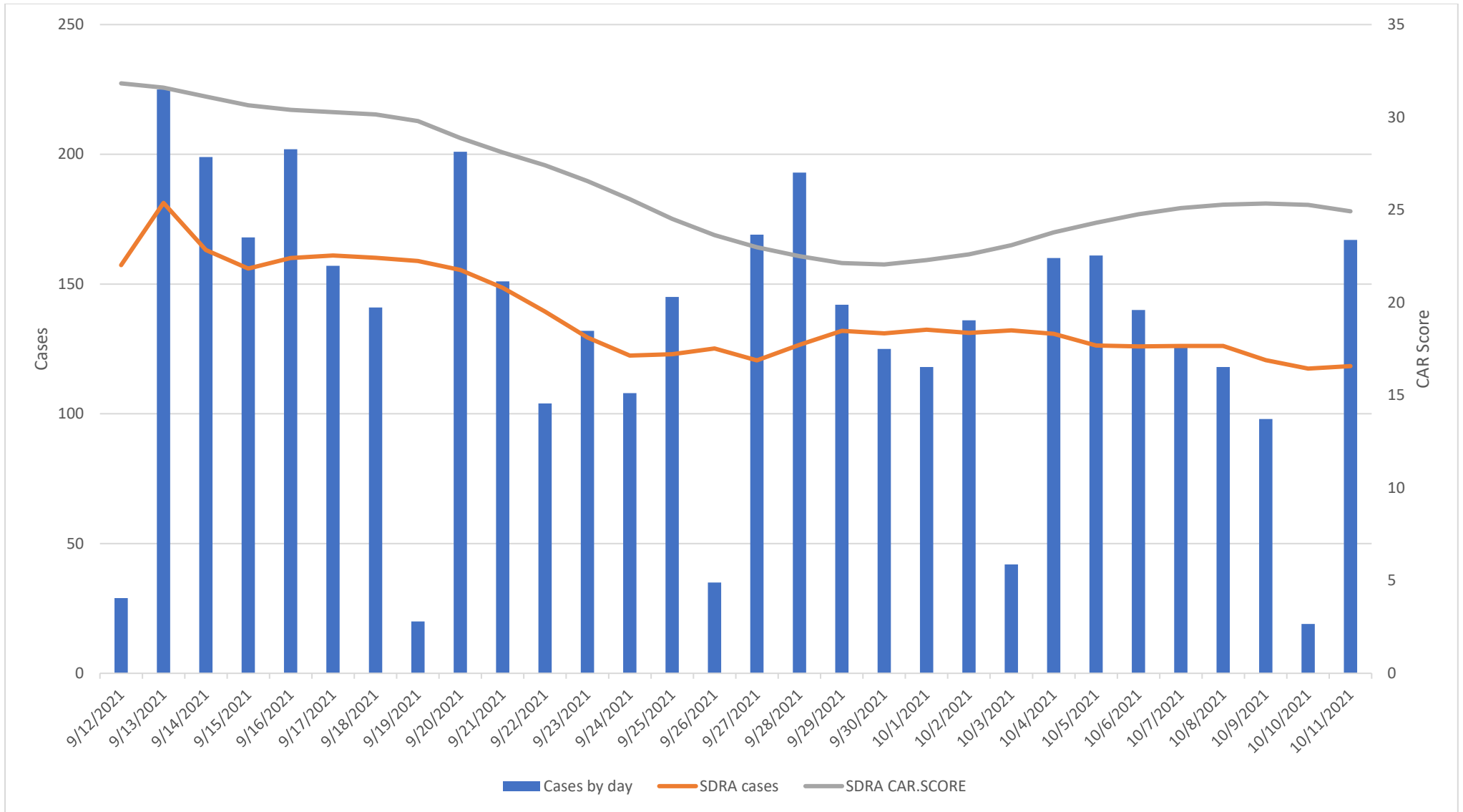




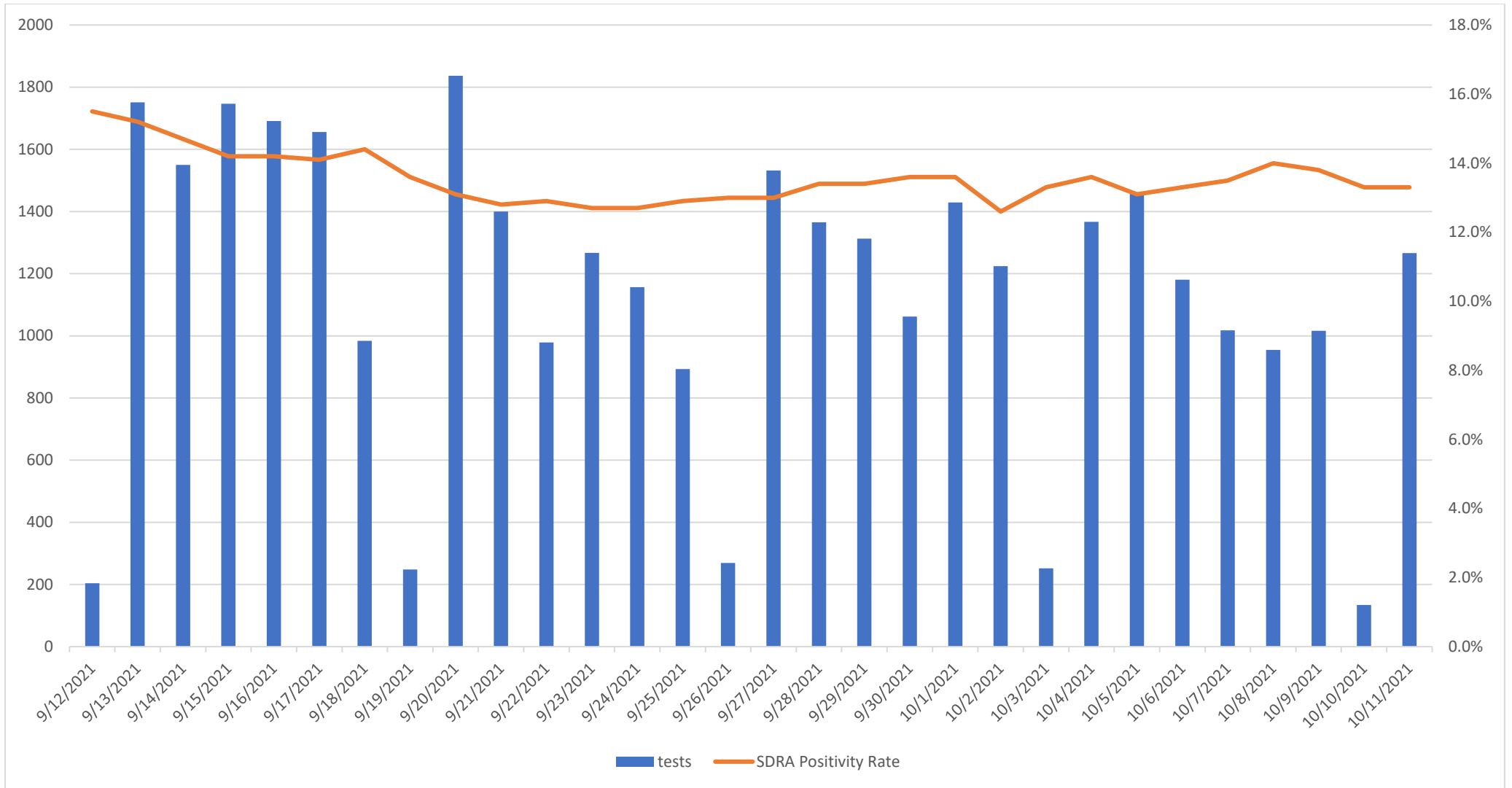
**COVID-19 DATA/SURVEILLANCE 2021 UPDATE:
COVID-19 SURGE TRENDS AND BREAKTHROUGH CASES SUMMARY**

**OFFICE OF EPIDEMIOLOGY AND RESEARCH & COVID-19 SURVEILLANCE UNIT
GUAM DEPARTMENT OF PUBLIC HEALTH AND SOCIAL SERVICES
10/12/2021**

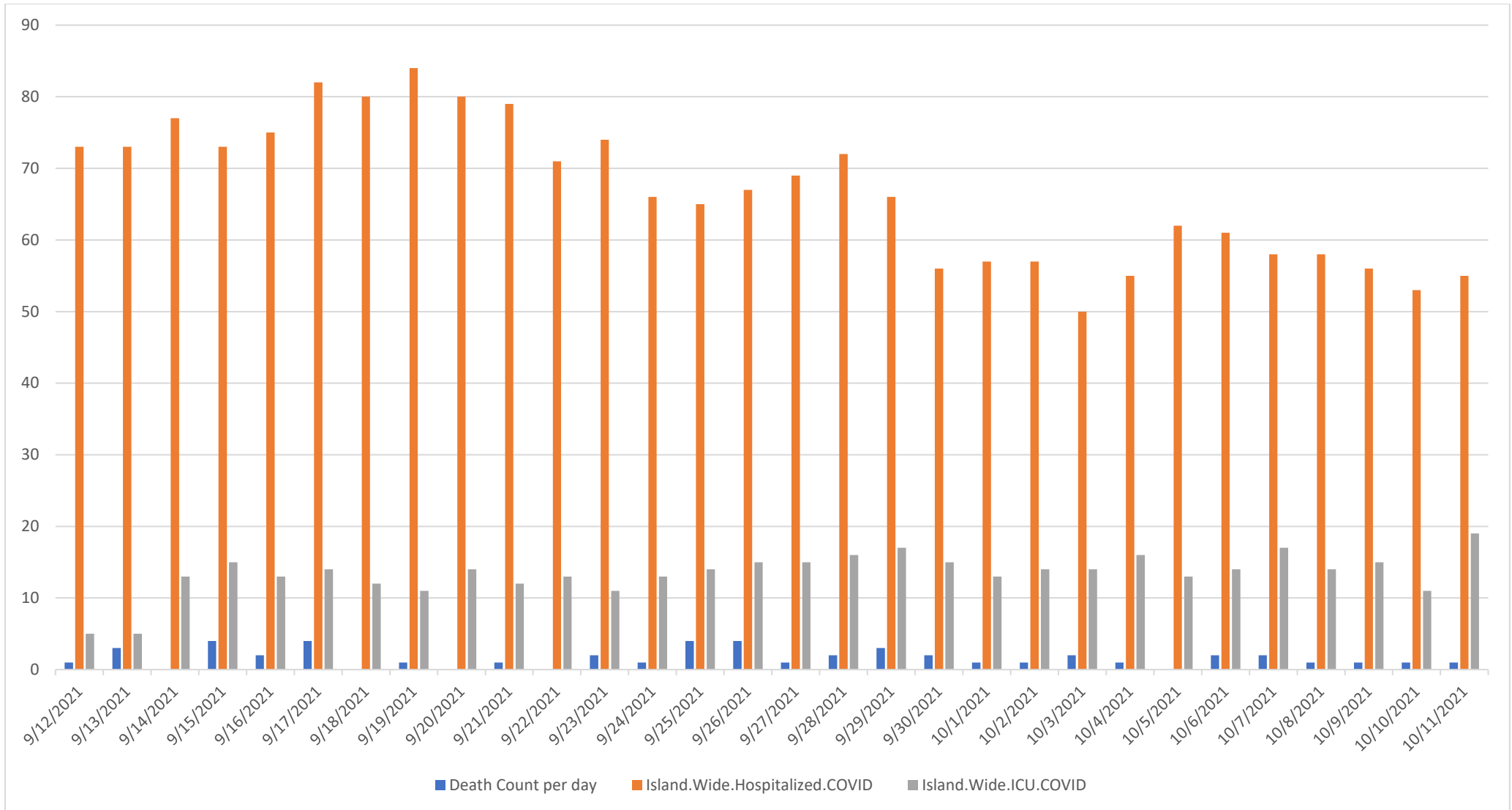


The rolling average of cases continues to fall at a slow and steady pace, and is currently at 118 cases per day on the Seven Day Rolling average.

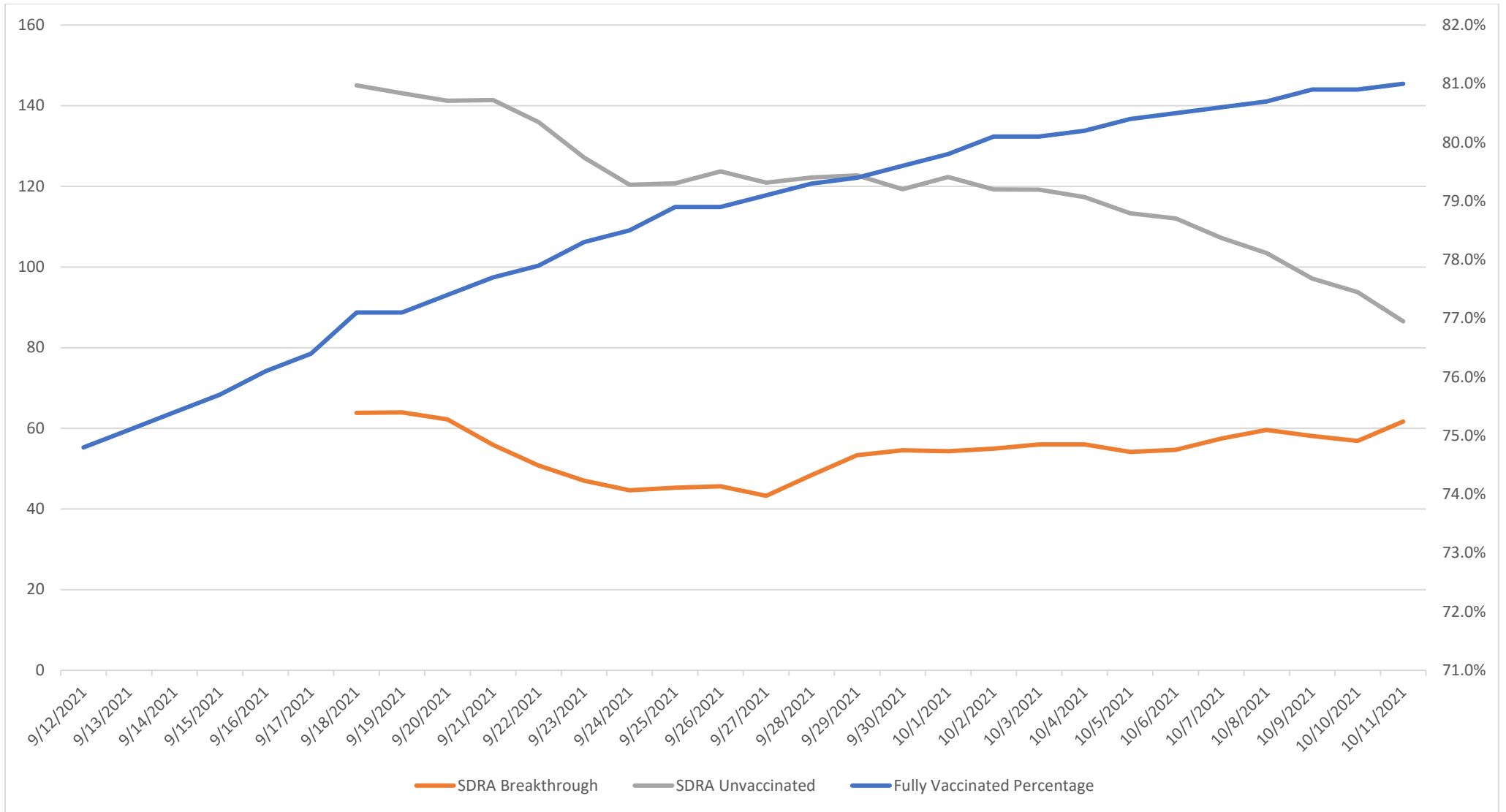
The CAR Score although continues to fluctuate between 20-25 but in total downward trend as well.



We are starting to observe a decrease in the numbers of tests that are being performed daily to less than 1000 tests per day, with the same positivity rate.



The hospital numbers continue to decrease, while the ICU numbers remain the same, with deaths continuing but decreasing.



Unvaccinated persons continuing to be the majority of infected cases in the population, while breakthrough cases through the surge have sustained a similar case rate.

We have finally reached 80% of the eligible population (12+) being fully vaccinated, which only includes civilian data not inclusive of the DoD vaccinated numbers.

BREAKTHROUGH CASES:

From 2/7/2021 to 10/7/2021, there have been 2,859 “breakthrough” cases among people who were fully vaccinated and subsequently tested positive.

The majority of these were Pfizer vaccines (64.9%), followed by Moderna (26.4%) and Johnson & Johnson (6.4%) with 2.3% unknown (DoD).

These cases were evenly distributed among males (50.7%) and females (49.3%).

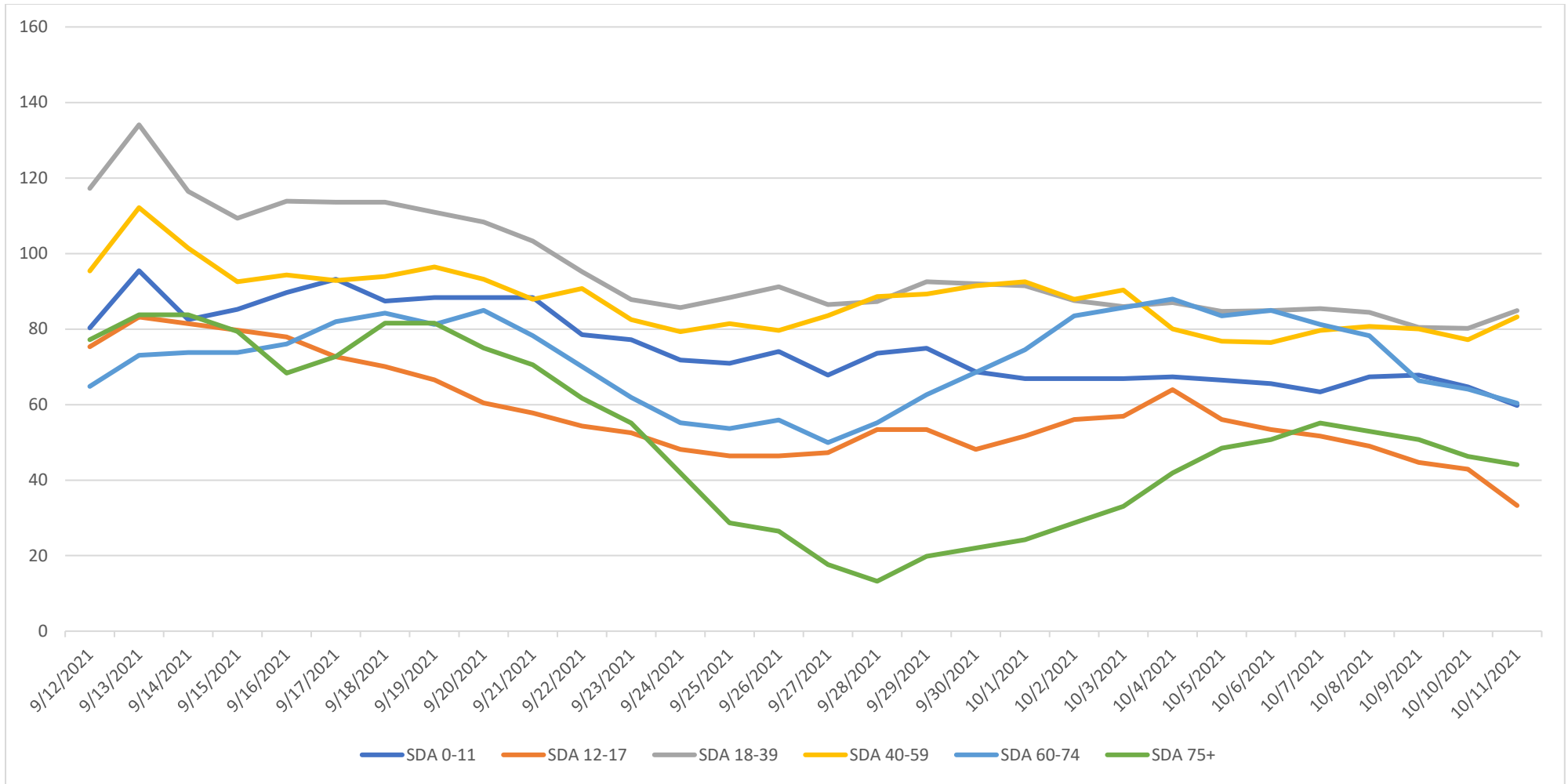
The majority of breakthrough cases occurred among those ages 18-39 (42.6%) and those 40-59 (35.1%), which are also the main age groups of positive cases during the surge.

There were 15.4% breakthrough cases among those aged 60-74, 4.3% among those age 12-17 and 3.6% among those ages 75 or older.

The average number of days between final vaccination dose and receipt of a positive test was 146.29 days or 4 and one-half months.

As of 10/1/2021, there were 137,105 fully vaccinated civilians, with 2,793 civilian "breakthrough cases" or 2%.

Among deaths up to 10/1/2021, fully vaccinated were n=10 or 13% (all of whom had multiple co-morbidities).



Case rates are beginning to fall and the age groups are starting to converge. The same groups maintain the highest rates, 18-39 years followed by the 40-59 years. Those 0-11 years and 60-74 years are also beginning to converge, while the 75+ years rate is now higher than the 12-17, which likely correlates to more in the 12-17 years group beginning to become fully vaccinated.

Data on trends are compiled by Vince Campo, CDC Foundation Research and Statistical Systems Analyst, DPHSS COVID-19 Surveillance Unit and reviewed by the Territorial Epidemiologist. For more information, contact the Territorial Epidemiologist: ann.pobutsky@dphss.guam.gov or (671) 888-9276 (WARN).